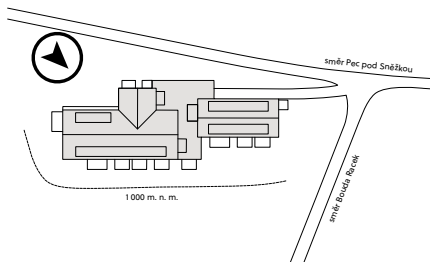
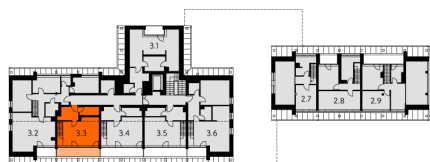


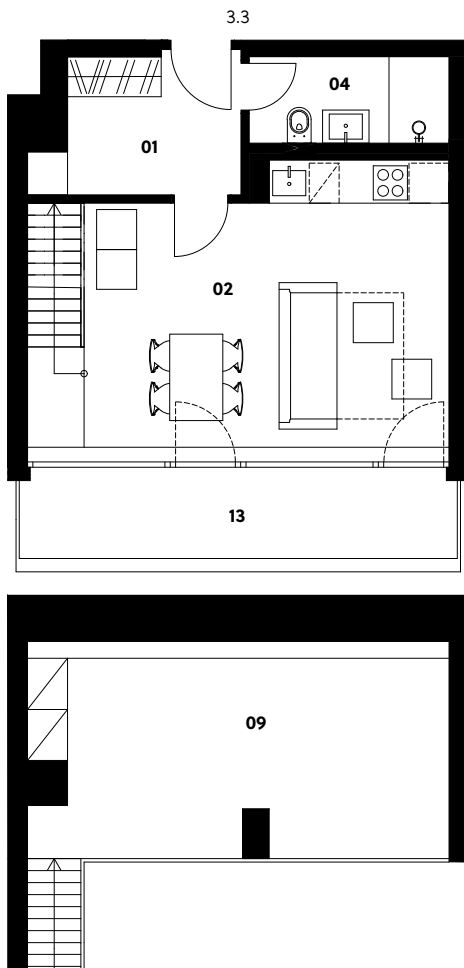
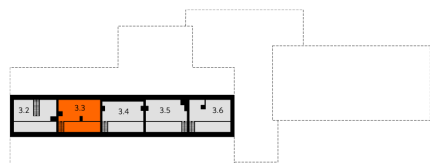
Situation



3. NP



4. NP



Zahrádky 1000

Apartment 3.3

2nd floor | 2 rooms | 58.3 m²

01	Entrance hall	5.8 m ²
02	Living room with kitchen	26.4 m ²
04	Bathroom	3.9 m ²
09	Gallery	20.0 m ²
Total usable area		56.1 m²
Total floor area		58.3 m²
13	Loggia	7.7 m ²
Exterior in total		7.7 m²

crescon
crescon.cz

The orange elements in the unit floor plan are not part of the offer. The floor area, according to Government Regulation No. 366/2013 Coll., is the floor area bounded by the inner sides of the perimeter walls, including the floor area of all vertical load-bearing and non-load-bearing structures inside the unit.