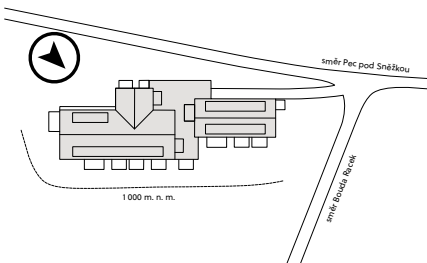
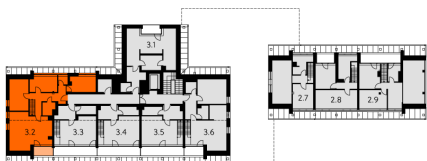


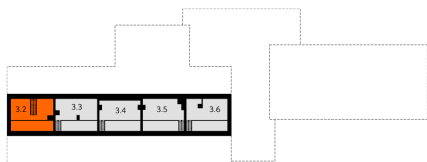
Situation



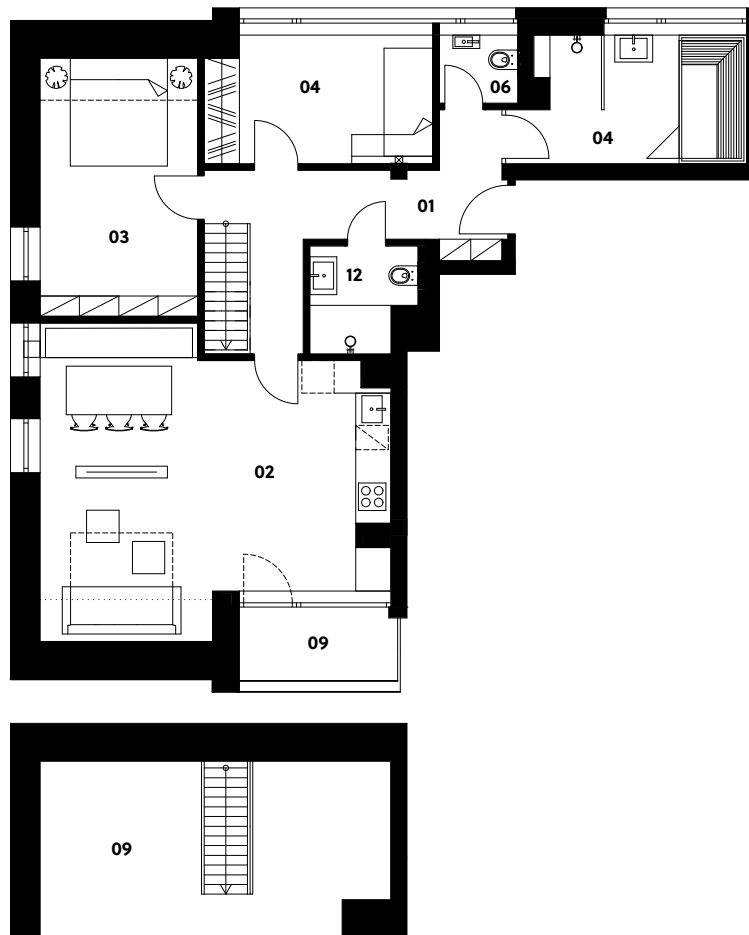
3. NP



4. NP



3.2



# Zahrádky 1000

## Apartment 3.2

2nd floor | 4 rooms | 108.8 m<sup>2</sup>

01	Entrance hall	12.7 m <sup>2</sup>
02	Living room with kitchen	32.7 m <sup>2</sup>
03	Bedroom	13.9 m <sup>2</sup>
04	Bathroom	9.7 m <sup>2</sup>
06	Lavatory	1.8 m <sup>2</sup>
07	Bedroom	9.8 m <sup>2</sup>
09	Gallery	18.5 m <sup>2</sup>
12	Bathroom	3.6 m <sup>2</sup>
<b>Total usable area</b>		<b>102.7 m<sup>2</sup></b>
<b>Total floor area</b>		<b>108.8 m<sup>2</sup></b>
13	Loggia	3.4 m <sup>2</sup>
<b>Exterior in total</b>		<b>3.4 m<sup>2</sup></b>

**crescon**  
crescon.cz

The orange elements in the unit floor plan are not part of the offer. The floor area, according to Government Regulation No. 366/2013 Coll., is the floor area bounded by the inner sides of the perimeter walls, including the floor area of all vertical load-bearing and non-load-bearing structures inside the unit.