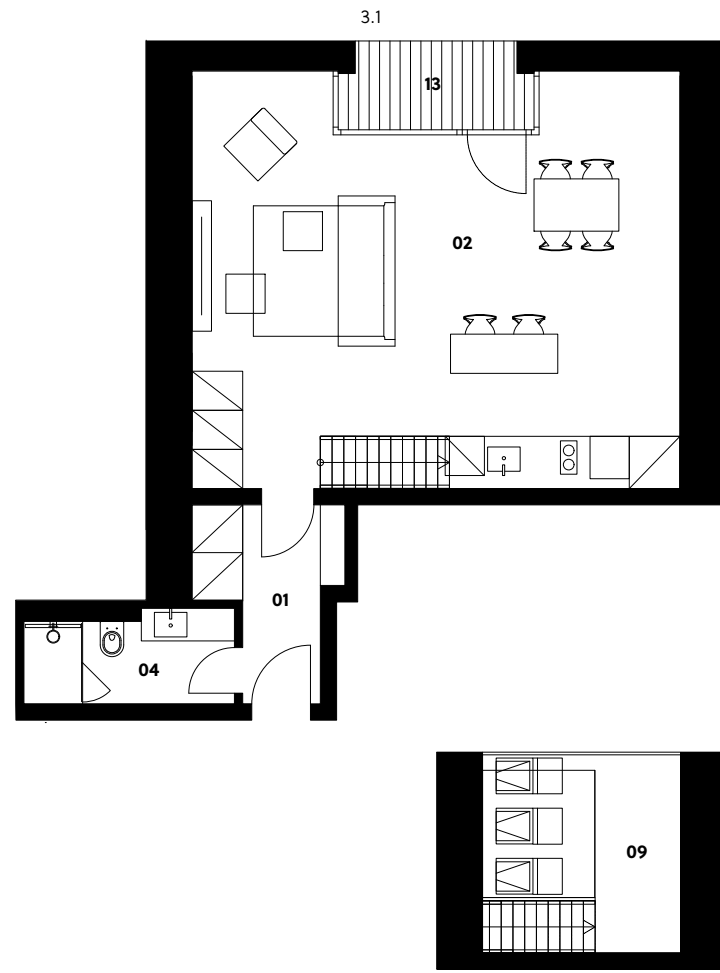
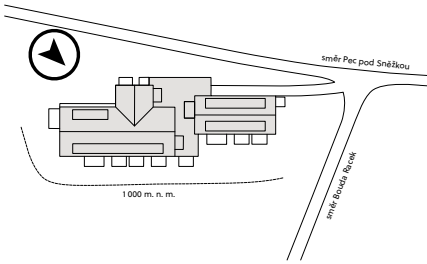


Situation



Zahrádky 1000

Apartment 3.1

2nd floor | 1 room | 62.6 m²

01	Entrance hall	5.2 m ²
02	Living room with kitchen	44.9 m ²
04	Bathroom	4.3 m ²
09	Gallery	7.8 m ²
Total usable area		62.2 m²
Total floor area		62.6 m²
13	Loggia	3.8 m ²
Exterior in total		3.8 m²

crescon

crescon.cz

The orange elements in the unit floor plan are not part of the offer. The floor area, according to Government Regulation No. 366/2013 Coll., is the floor area bounded by the inner sides of the perimeter walls, including the floor area of all vertical load-bearing and non-load-bearing structures inside the unit.