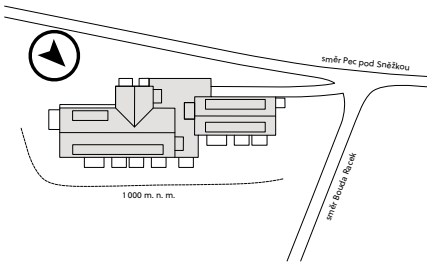


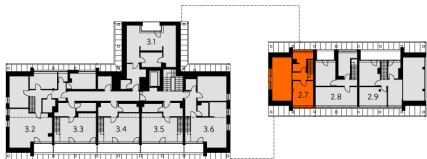
Situation



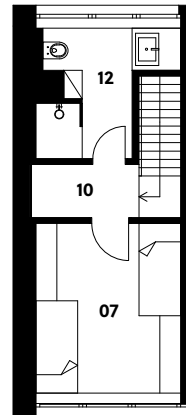
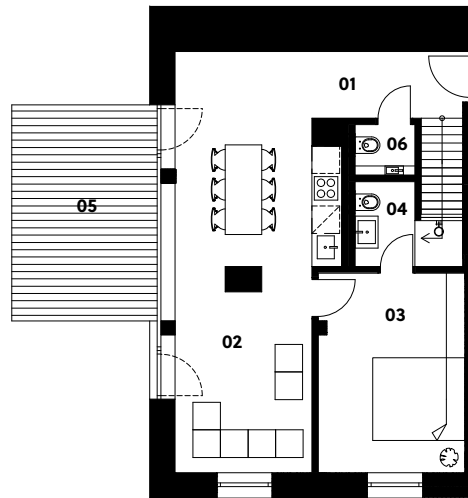
2. NP



3. NP



2.7



Zahrádky 1000

Apartment 2.7

1st floor | 3 rooms | 84.1 m²

01	Entrance hall	5.9 m ²
02	Living room with kitchen	32.1 m ²
03	Bedroom	13.8 m ²
04	Bathroom	3.4 m ²
06	Lavatory	1.4 m ²
07	Bedroom	11.5 m ²
10	Corridor	2.7 m ²
12	Bathroom	6.6 m ²

Total usable area 77.4 m²

Total floor area 84.1 m²

05 Terrace 14.6 m²

Exterior in total 14.6 m²

crescon

crescon.cz

The orange elements in the unit floor plan are not part of the offer. The floor area, according to Government Regulation No. 366/2013 Coll., is the floor area bounded by the inner sides of the perimeter walls, including the floor area of all vertical load-bearing and non-load-bearing structures inside the unit.