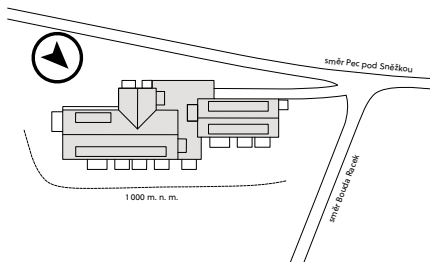
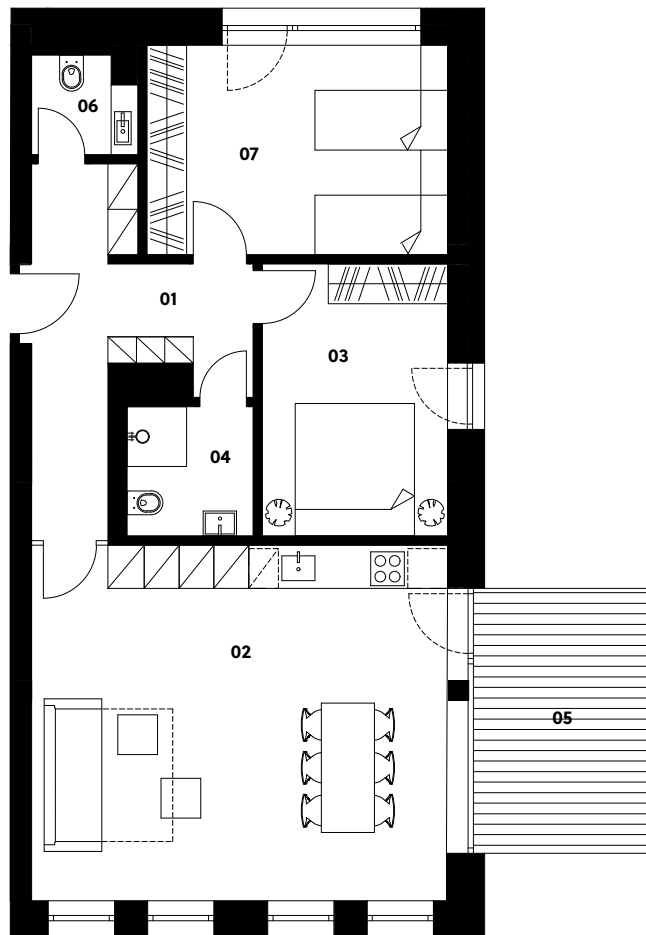


Situation



2.6



Zahrádky 1000

Apartment 2.6

1st floor | 3 rooms | 83.3 m²

01	Entrance hall	11.0 m ²
02	Living room with kitchen	35.3 m ²
03	Bedroom	11.8 m ²
04	Bathroom	3.7 m ²
06	Lavatory	2.2 m ²
07	Bedroom	15.0 m ²
Total usable area		79.0 m²
Total floor area		83.3 m²
05	Terrace	10.0 m ²
Exterior in total		10.0 m²

crescon
crescon.cz

The orange elements in the unit floor plan are not part of the offer. The floor area, according to Government Regulation No. 366/2013 Coll., is the floor area bounded by the inner sides of the perimeter walls, including the floor area of all vertical load-bearing and non-load-bearing structures inside the unit.