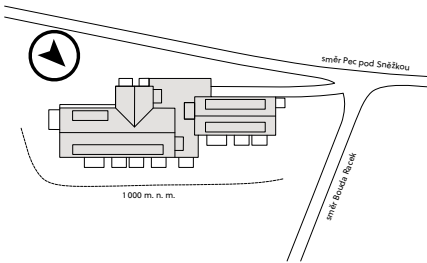
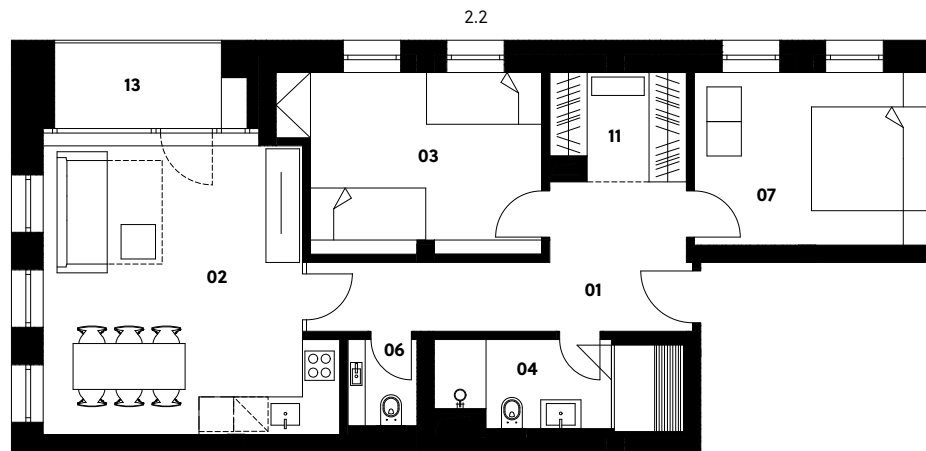


## Situation



## 2. NP



# Zahrádky 1000

## Apartment 2.2

1st floor | 3 rooms | 78.7 m<sup>2</sup>

01	Entrance hall	11.3 m <sup>2</sup>
02	Living room with kitchen	26.4 m <sup>2</sup>
03	Bedroom	12.9 m <sup>2</sup>
04	Bathroom	6.4 m <sup>2</sup>
06	Lavatory	1.8 m <sup>2</sup>
07	Bedroom	12.4 m <sup>2</sup>
11	Cloakroom	4.1 m <sup>2</sup>
<b>Total usable area</b>		<b>75.3 m<sup>2</sup></b>
<b>Total floor area</b>		<b>78.7 m<sup>2</sup></b>
13	Loggia	4.2 m <sup>2</sup>
<b>Exterior in total</b>		<b>4.2 m<sup>2</sup></b>

**crescon**  
crescon.cz

The orange elements in the unit floor plan are not part of the offer. The floor area, according to Government Regulation No. 366/2013 Coll., is the floor area bounded by the inner sides of the perimeter walls, including the floor area of all vertical load-bearing and non-load-bearing structures inside the unit.