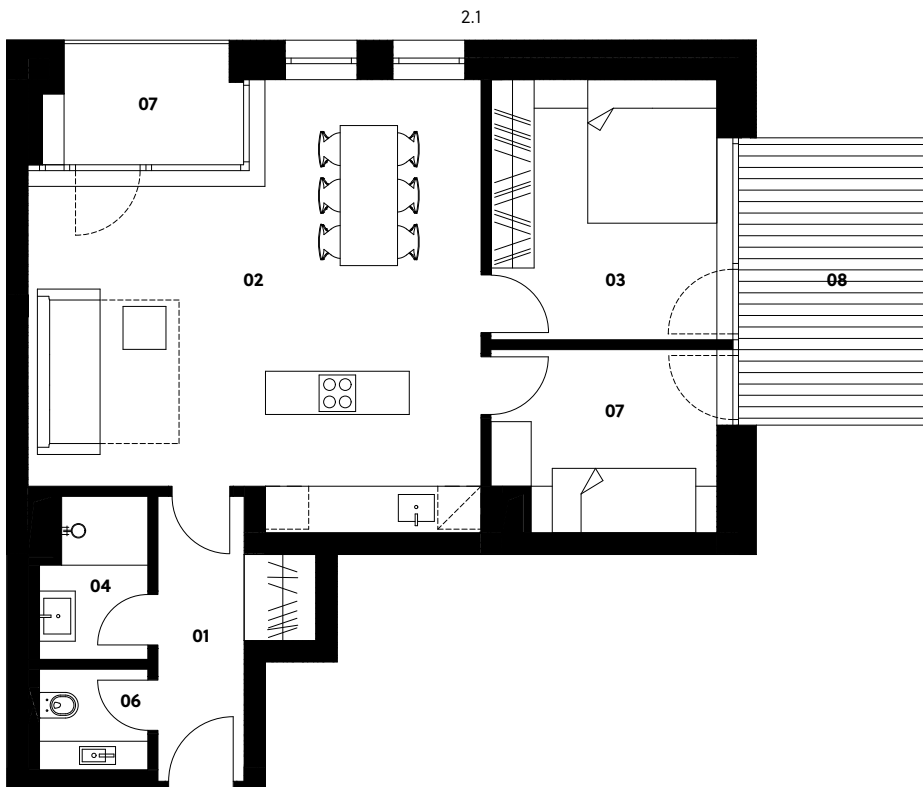
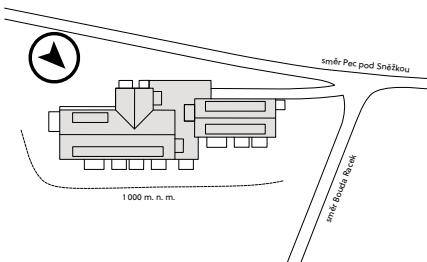


Situation



Zahrádky 1000

Apartment 2.1

1st floor | 3 rooms | 68.7 m²

01	Entrance hall	5.1 m ²
02	Living room with kitchen	34.1 m ²
03	Bedroom	11.2 m ²
04	Bathroom	3.0 m ²
06	Lavatory	2.2 m ²
07	Bedroom	9.6 m ²
Total usable area		65.2 m²
Total floor area		68.7 m²
05	Terrace	10.8 m ²
13	Loggia	4.4 m ²
Exterior in total		15.2 m²

crescon
crescon.cz

The orange elements in the unit floor plan are not part of the offer. The floor area, according to Government Regulation No. 366/2013 Coll., is the floor area bounded by the inner sides of the perimeter walls, including the floor area of all vertical load-bearing and non-load-bearing structures inside the unit.