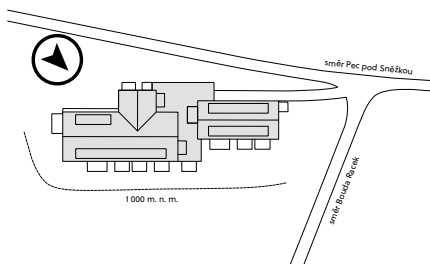


Situation

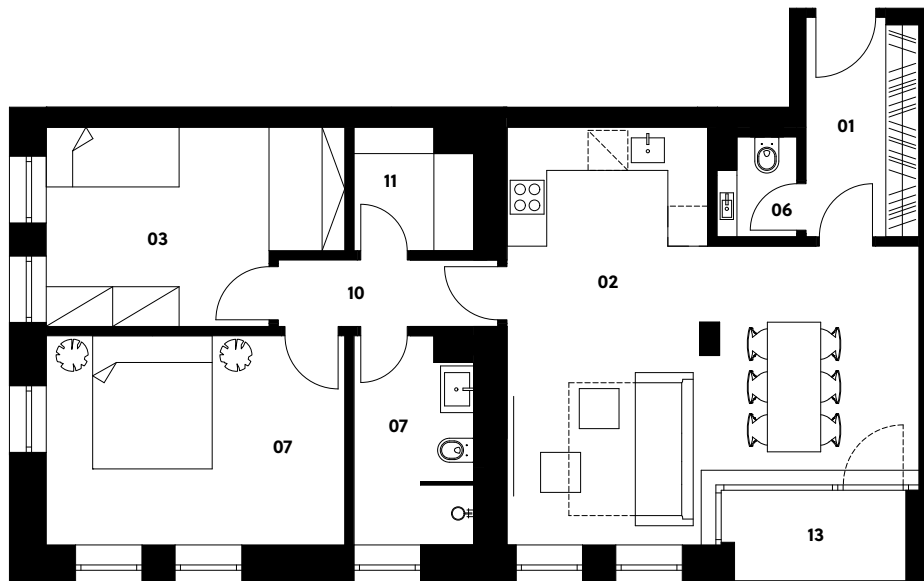


1.4

Zahrádky 1000

Apartment 1.4

Ground floor | 3 rooms | 81.4 m²



01	Entrance hall	5.4 m ²
02	Living room with kitchen	31.1 m ²
03	Bedroom	12.2 m ²
04	Bathroom	5.4 m ²
06	Lavatory	1.7 m ²
07	Bedroom	14.3 m ²
10	Corridor	3.3 m ²
11	Cloakroom	3.1 m ²
Total usable area		76.5 m²
Total floor area		81.4 m²
13	Loggia	2.3 m ²
Exterior in total		2.3 m²

crescon
crescon.cz

The orange elements in the unit floor plan are not part of the offer. The floor area, according to Government Regulation No. 366/2013 Coll., is the floor area bounded by the inner sides of the perimeter walls, including the floor area of all vertical load-bearing and non-load-bearing structures inside the unit.