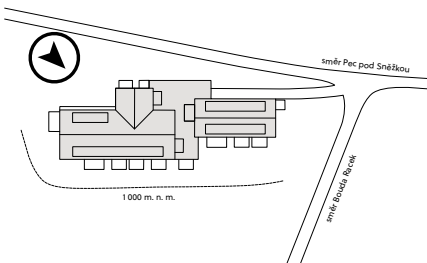


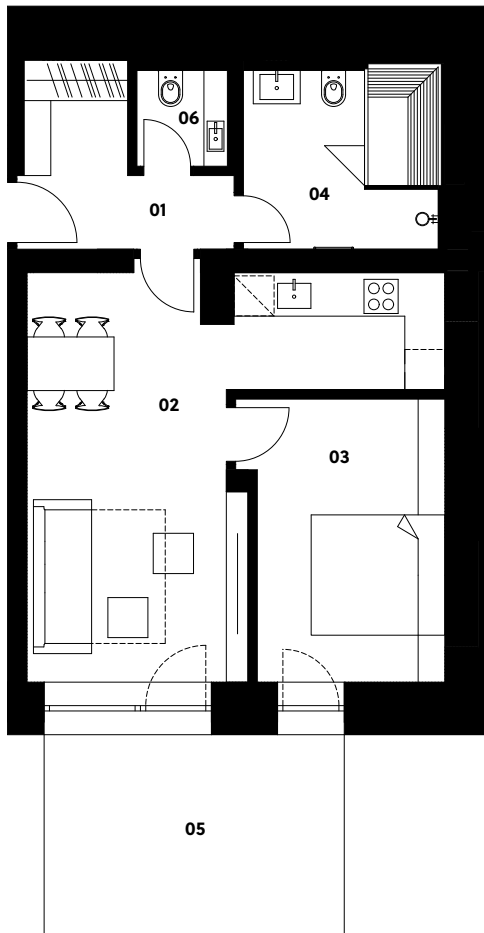
Situation



1. PP



0.9



# Zahrádky 1000

## Apartment 0.9

1st basement | 2 rooms | 59.6 m<sup>2</sup>

01	Entrance hall	6.1 m <sup>2</sup>
02	Living room with kitchen	25.4 m <sup>2</sup>
03	Bedroom	12.6 m <sup>2</sup>
04	Bathroom	8.5 m <sup>2</sup>
06	Lavatory	1.9 m <sup>2</sup>
<b>Total usable area</b>		<b>54.5 m<sup>2</sup></b>
<b>Total floor area</b>		<b>59.6 m<sup>2</sup></b>
05	Terrace	13.5 m <sup>2</sup>
<b>Exterior in total</b>		<b>13.5 m<sup>2</sup></b>

**crescon**  
crescon.cz

The orange elements in the unit floor plan are not part of the offer. The floor area, according to Government Regulation No. 366/2013 Coll., is the floor area bounded by the inner sides of the perimeter walls, including the floor area of all vertical load-bearing and non-load-bearing structures inside the unit.