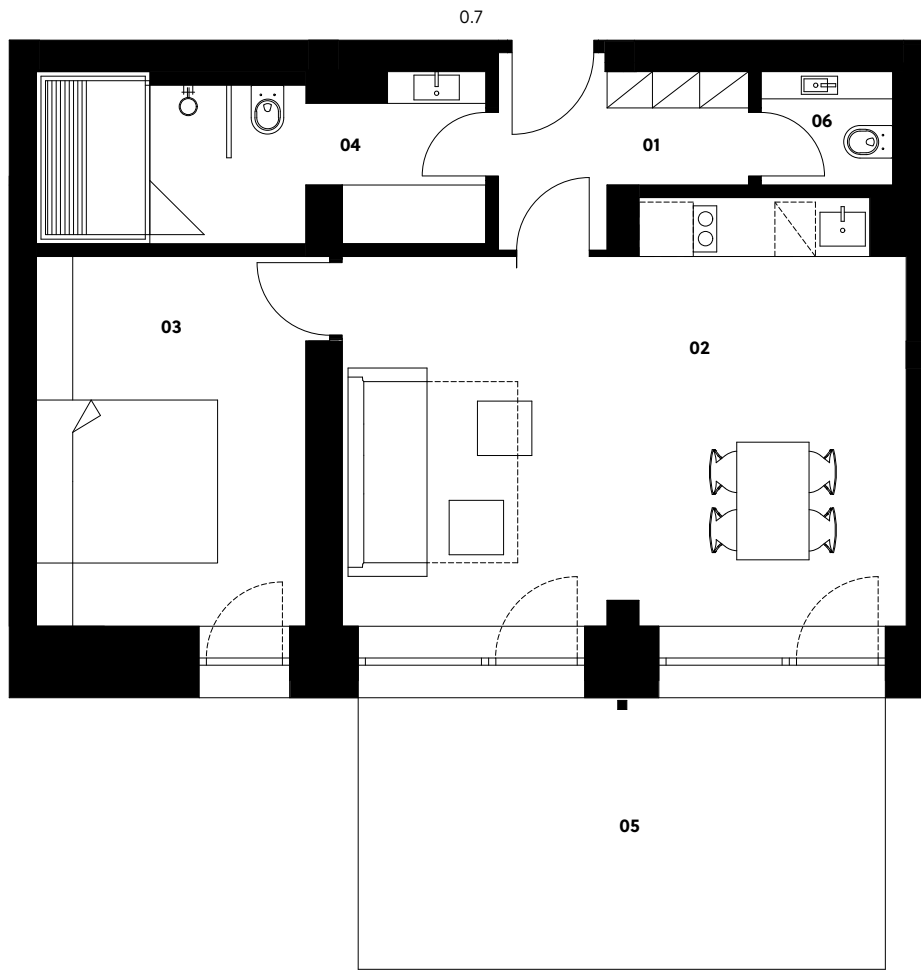
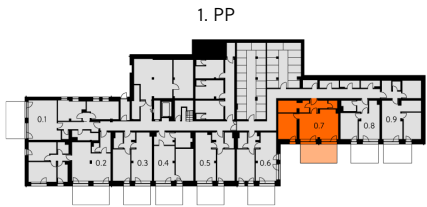
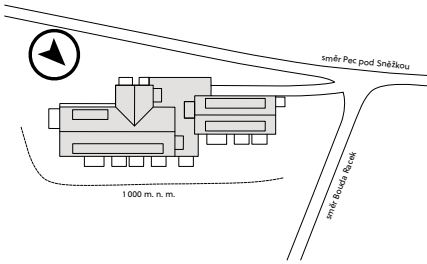


Situation



Zahrádky 1000

Apartment 0.7

1st basement | 2 rooms | 60.1 m²

01	Entrance hall	4.3 m ²
02	Living room with kitchen	28.7 m ²
03	Bedroom	12.5 m ²
04	Bathroom	8.8 m ²
06	Lavatory	1.8 m ²
Total usable area		56.1 m²
Total floor area		60.1 m²
05	Terrace	17.5 m ²
Exterior in total		17.5 m²

crescon

crescon.cz

The orange elements in the unit floor plan are not part of the offer. The floor area, according to Government Regulation No. 366/2013 Coll., is the floor area bounded by the inner sides of the perimeter walls, including the floor area of all vertical load-bearing and non-load-bearing structures inside the unit.