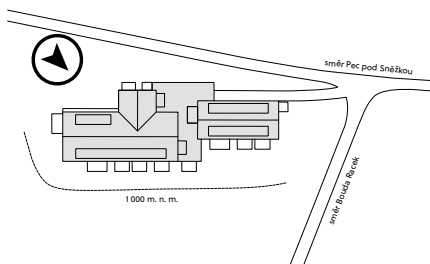


Situation

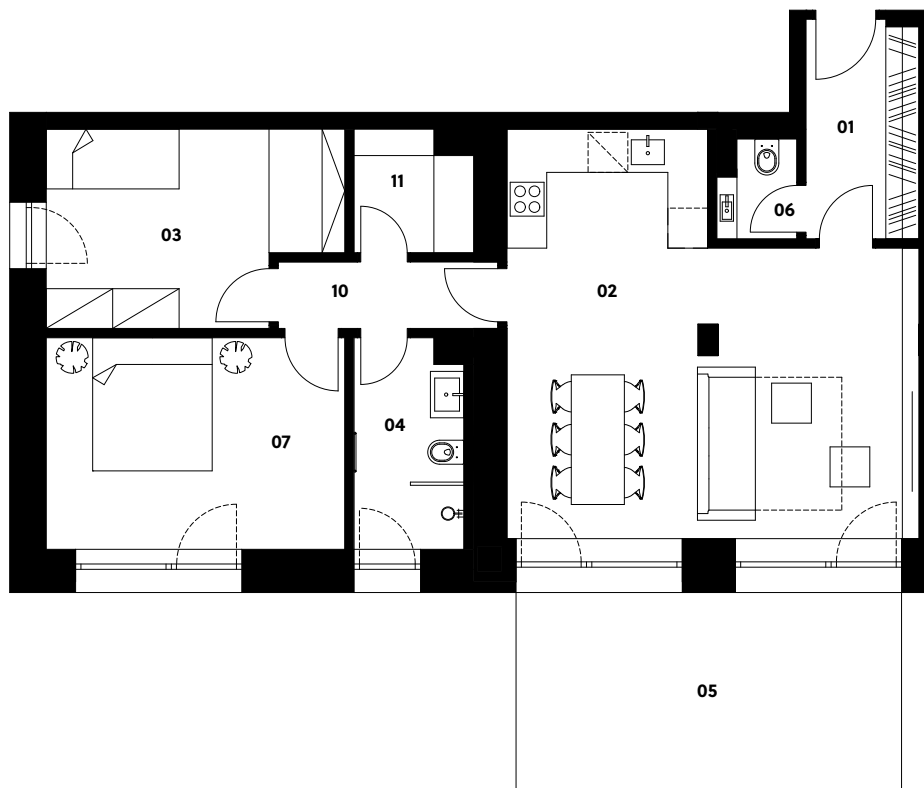
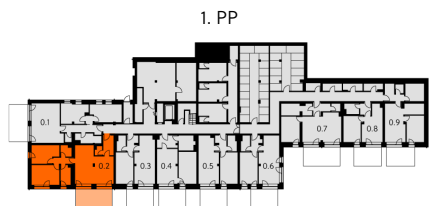


0.2

Zahrádky 1000

Apartment 0.2

1st basement | 3 rooms | 87.7 m²



01	Entrance hall	5.4 m ²
02	Living room with kitchen	34.2 m ²
03	Bedroom	12.4 m ²
04	Bathroom	5.6 m ²
06	Lavatory	1.7 m ²
07	Bedroom	14.7 m ²
10	Corridor	3.3 m ²
11	Cloakroom	2.9 m ²
Total usable area		80.2 m²
Total floor area		87.7 m²
05	Terrace	17.4 m ²
Exterior in total		17.4 m²

crescon
crescon.cz

The orange elements in the unit floor plan are not part of the offer. The floor area, according to Government Regulation No. 366/2013 Coll., is the floor area bounded by the inner sides of the perimeter walls, including the floor area of all vertical load-bearing and non-load-bearing structures inside the unit.