

# Zahrádky 1000

## Apartment 0.1

1st basement | 3 rooms | 79.6 m<sup>2</sup>

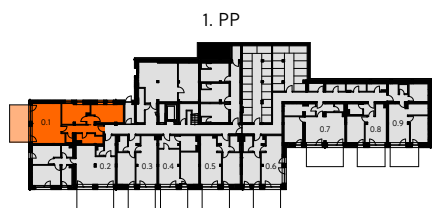
01	Entrance hall	9.9 m <sup>2</sup>
02	Living room with kitchen	31.0 m <sup>2</sup>
03	Bedroom	12.9 m <sup>2</sup>
04	Bathroom	5.8 m <sup>2</sup>
06	Lavatory	1.6 m <sup>2</sup>
07	Bedroom	13.7 m <sup>2</sup>

**Total usable area** 74.9 m<sup>2</sup>

**Total floor area** 79.6 m<sup>2</sup>

05	Terrace	17.4 m <sup>2</sup>
----	---------	---------------------

**Exterior in total** 17.4 m<sup>2</sup>



# crescon

crescon.cz

The orange elements in the unit floor plan are not part of the offer. The floor area, according to Government Regulation No. 366/2013 Coll., is the floor area bounded by the inner sides of the perimeter walls, including the floor area of all vertical load-bearing and non-load-bearing structures inside the unit.